

SUPER LED TUBES 165 LUMENS PER WATT

High Efficiency 4ft LED T8 Super Tube Series

Model # **EDI-APT8-4F12-B (XXXXK)** (DLC Standard)



James Energy

This high lumen efficacy direct wire tube, this UL type B T8 LED tube makes installation quick and easy. Operating at only 12-Watts, this LED lamp saves up to 70 percent in energy cost and lasts twice as long than a 30-Watt fluorescent tube!

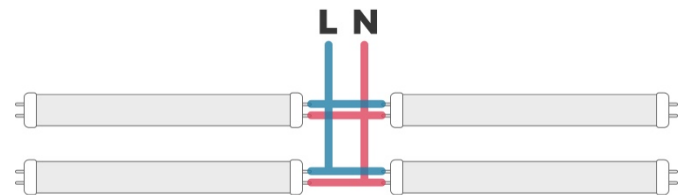
Polycarbonate lens provides even light distribution without losing brightness. Versatile hybrid lamp fits into shunted and non-shunted lamp holders. Produces an ideal 4000K or 5000K color temperature for task lighting. This product DLC eligible for energy rebate program.



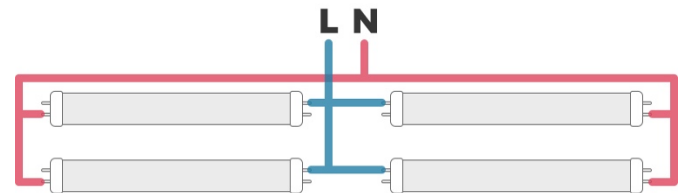
Technical Data

Brand	EDI
Light Output	2000 lm \pm 5%
Wattage	12 W \pm 5%
CRI	83.2
Total Harmonic Distortion	14.1%
Lumen Efficiency	165 lumens per Watt
Input Voltage	AC 100 ~ 277V
Frequency	50/60 Hz
Dimming Status	Non-dimmable
Rated Life	50,000+ Hours
Power Factor	0.905
Housing	Aluminum + PC
CCT	3500K, 4000K, 5000K

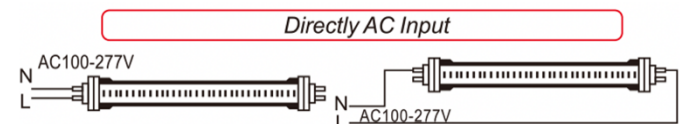
Wiring Instruction



Single Ended Wiring: Use with non-shunted sockets



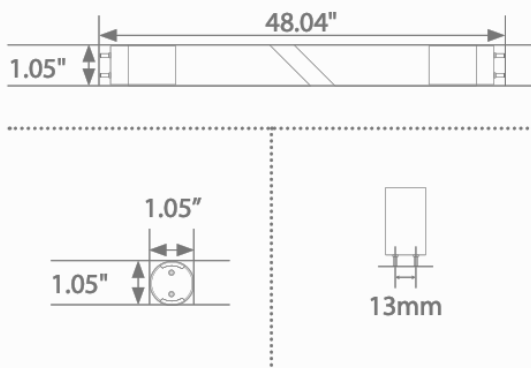
Opposing Ended Wiring: Use with shunted or non-shunted sockets



Retrofit Replacement Procedure:

1. Turn off power to the fixture at the breaker panel before installation.
2. Remove the fluorescent tubes and dispose of these properly as they may contain mercury.
3. Cut wire and remove fluorescent tubes.
4. Make a new wire connection to the branch circuit and bypass the ballast. Install the LED tubes and close the diffuser
5. Switch ON power to the fixture at the breaker panel.

Dimensions



Warranty

The manufacturer warrants this product to be free from defects in workmanship and materials, under normal residential use and conditions, for a period of two (2) year for the original invoice date. Shipping and handling fees are to be paid for by the customer. The manufacturer agrees, at its option during the warranty period, to repair and defect in material or workmanship or to furnish a repaired or refurbished product of equal value in exchange without charge (except for a fee for shipping, handling, packing, return postage, and insurance which will be incurred by the customer). Such repair or replacement is subject to verification of the defect or malfunction and proof of purchase as confirmed by showing the model number on original dated sales receipt.